

TEL: +975 8272760
AFTN: VQPRYNYX
E-mail: aim@doat.gov.bt



ROYAL GOVERNMENT OF BHUTAN
DEPARTMENT OF AIR TRANSPORT
AERONAUTICAL INFORMATION SERVICE
Paro International Airport

AIP

Supplement 002/25
08 SEP 2025

GELEPHU INTERNATIONAL AIRPORT (VQGP) — CONSTRUCTION WORK WEST OF RUNWAY

1 INTRODUCTION

With effect from 08 SEP 2025, this AIP Supplement informs all concerned of long-duration earthworks located west of the existing runway at Gelephu International Airport. The layout is shown in Attachment A.

2 CONSTRUCTION DETAILS

- 2.1. Location of construction area: Immediately west of the existing runway, across the Big Aiopoly River, at the new runway site.
- 2.2. Key activities: Earth cutting, backfilling, and ground re-grading to form the eastern end of the new runway platform.
- 2.3. Period: H24
- 2.4. Maximum elevation/plant height: The backfilled platform will reach approximately 30 m above the existing elevation at the RWY 11 threshold.
- 2.5. Operating arrangements: Normal runway operations are not expected to be affected by works west of the existing Gelephu International Airport runway. Landings on RWY 29 and departures from RWY 11 remain as published. Flight crews shall exercise caution during missed approach or go around due to backfilled ground rising approximately 30 m above runway level, located approximately 300 m west of THR RWY 11 and 1400 m from the RWY 29 aiming point.

3 OBSTACLE DETAILS

- 3.1. Obstacle type: Earth fill platform associated with the new runway formation.
- 3.2. Location relative to runway: Approximately 300 m from RWY 11 threshold and approximately 1400 m from RWY 29 aiming point, on the western side of the aerodrome.
- 3.3. Height/Elevation: Up to approximately 30 m above existing runway level; exact local elevations depend on phasing. NOTAM will notify of any discrete obstacles exceeding planned profiles.

4 CANCELLATION METHODS

This AIP Supplement will remain in force until its contents have been incorporated into AIP.

TEL: +975 8272760
AFTN: VQPRYNYX
E-mail: aim@doat.gov.bt



ROYAL GOVERNMENT OF BHUTAN
DEPARTMENT OF AIR TRANSPORT
AERONAUTICAL INFORMATION SERVICE
Paro International Airport

AIP

Supplement 002/25
08 SEP 2025

5 CONTACT

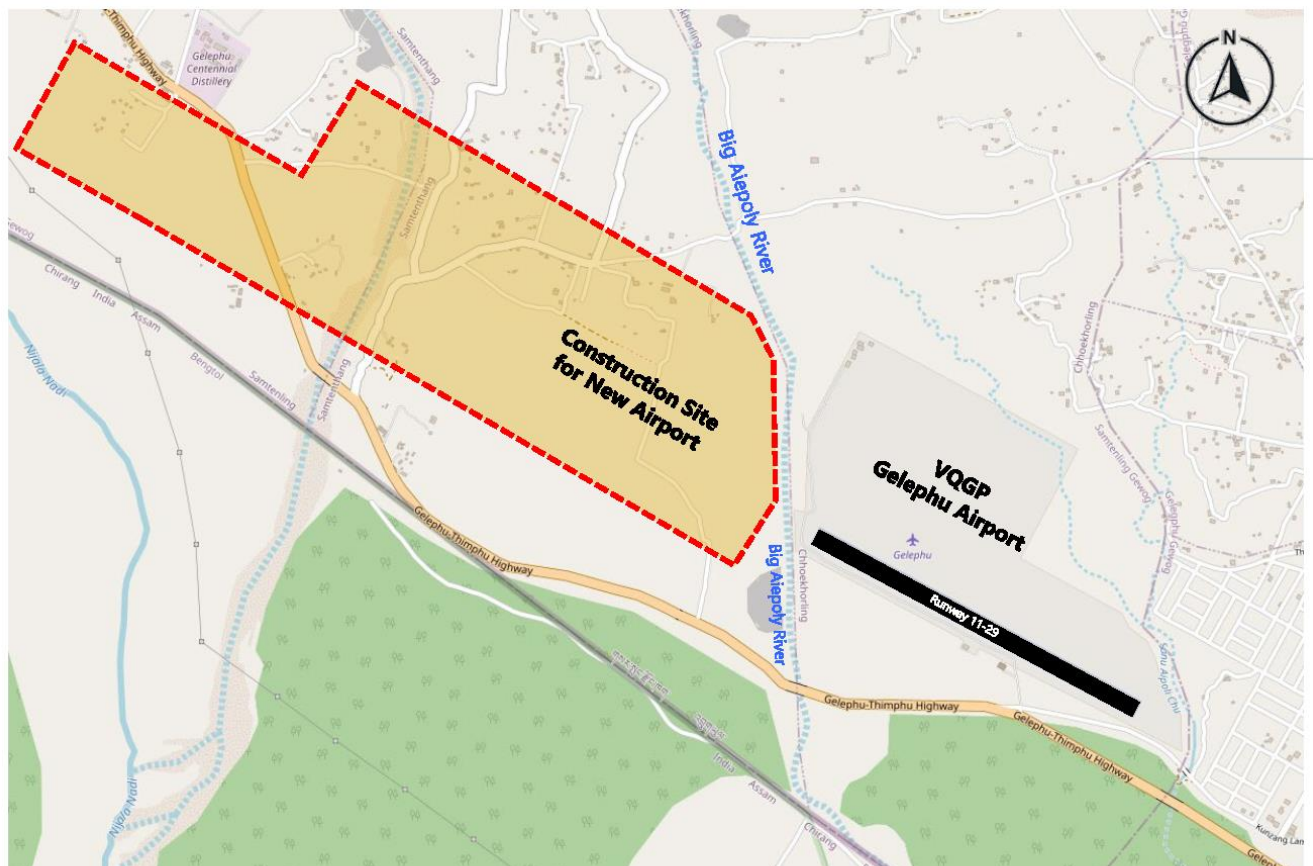
For further information, contact us via the following:

Unit: Aeronautical Information Services, Department of Air Transport.

Tel: +975 17421949 / +975 17263430

E-mail: aim@doat.gov.bt

ATTACHMENT A



Location Plan for Construction Work Activities West of Gelephu Airport